

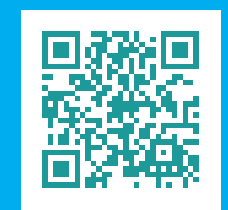


- Points of Interest**
- |   |  |
|---|--|
| 1. Bailey-Matthews National Shell Museum                          | 7. Sanibel-Captiva Conservation Foundation |
| 2. BIG ARTS   | 8. Sanibel Historical Village              |
| 3. City Hall / Police   | 9. Sanibel Public Library                  |
| 4. C.R.O.W.   | 10. Sanibel Lighthouse                     |
| 5. J.N. "Ding" Darling Wildlife Refuge Entrance – Visitors Center | 11. Sanibel Marina                         |
| 6. BIG ARTS The Herb Strauss Theater                              | 12. Sanibel Post Office                    |
|   | 13. Sanibel Recreation Center              |
|   | 14. Tarpon Bay Nature Center               |
|   | 15. SCA Community House                    |
|   | 16. Historic Cemetery                      |
|   | 17. Sanibel Sea School                     |
|   | 18. Bike Stop                              |
|   | 19. Bailey Homestead (SCCF)                |
|   | 20. Pond Apple Park                        |

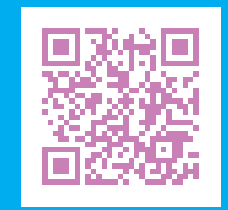
- Legend**
- Public Golf Course
  - Bike Paths  
Bike Paths run parallel to, but not on, the roadway
  - Public Beach Access
  - Public Parking Available (Fee)
  - Fishing Pier
  - Lighthouse (Point Ybel Light)
  - Boat Ramp
- All Sanibel beach Parking Lots have restrooms except Blind Pass.

# Sanibel & Captiva Islands

## POINTS OF INTEREST



Scan the Icon and go directly to our Mobile web site



<http://www.facebook.com/SanibelCaptivaChamber>  
Scan the Icon and go directly to our Facebook page



<http://www.twitter.com/#!/SanCapChamber>








Sanibel Island is approximately 12 miles long and three miles across at its widest. Captiva Island measures about five miles long and 1/2-mile wide.

# Captiva & Sister Islands

POINTS OF INTEREST



## Legend

-  Public Golf Course
-  Bike Paths
- Bike Paths run parallel to, but not on, the roadway*
-  Public Beach Access
-  Public Parking Available (Fee)
-  Fishing Pier
-  Lighthouse (Point Ybaal Light)
-  Boat Ramp

All Sanibel locations have restrooms except Silver Pass Beach

